

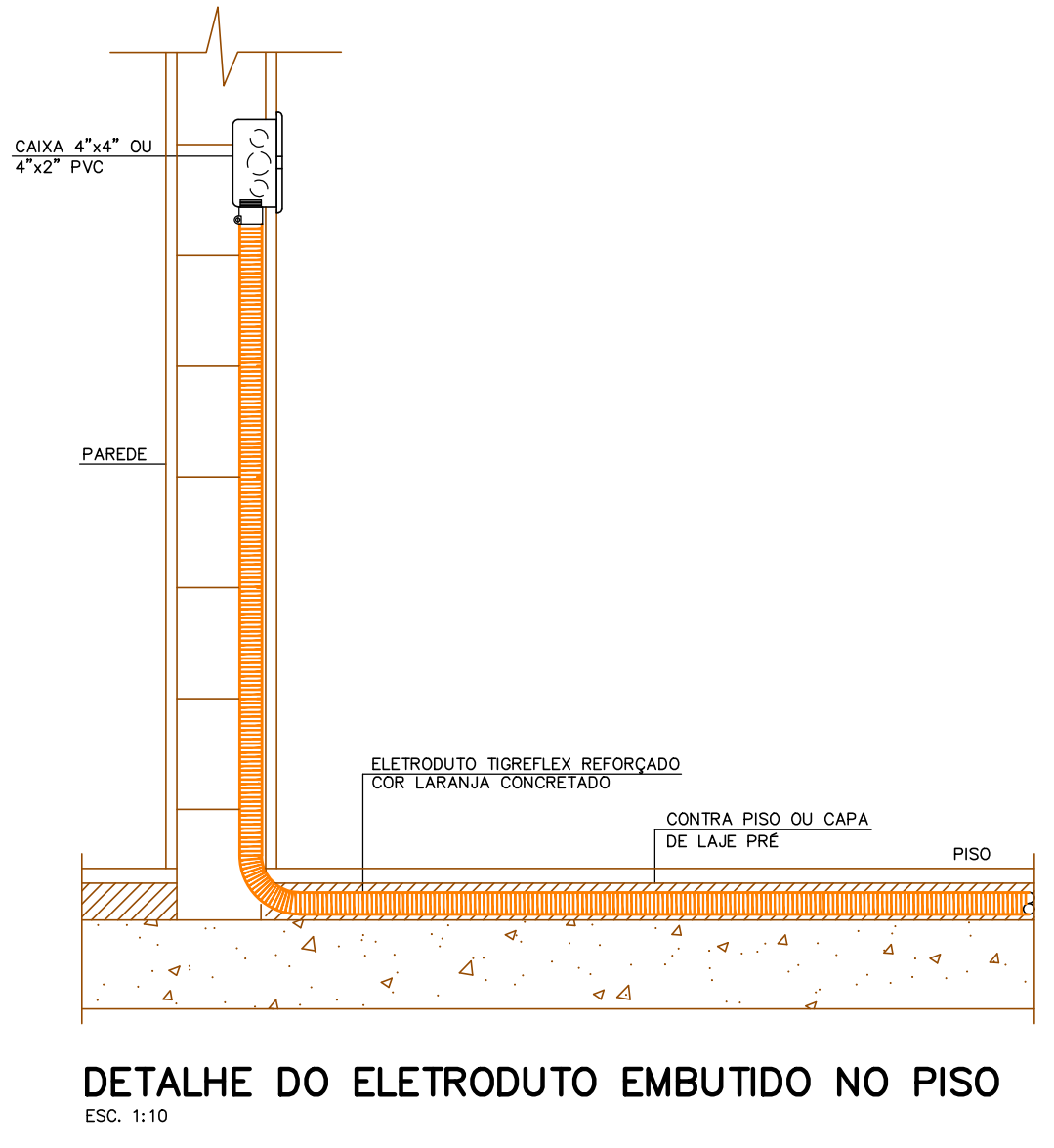
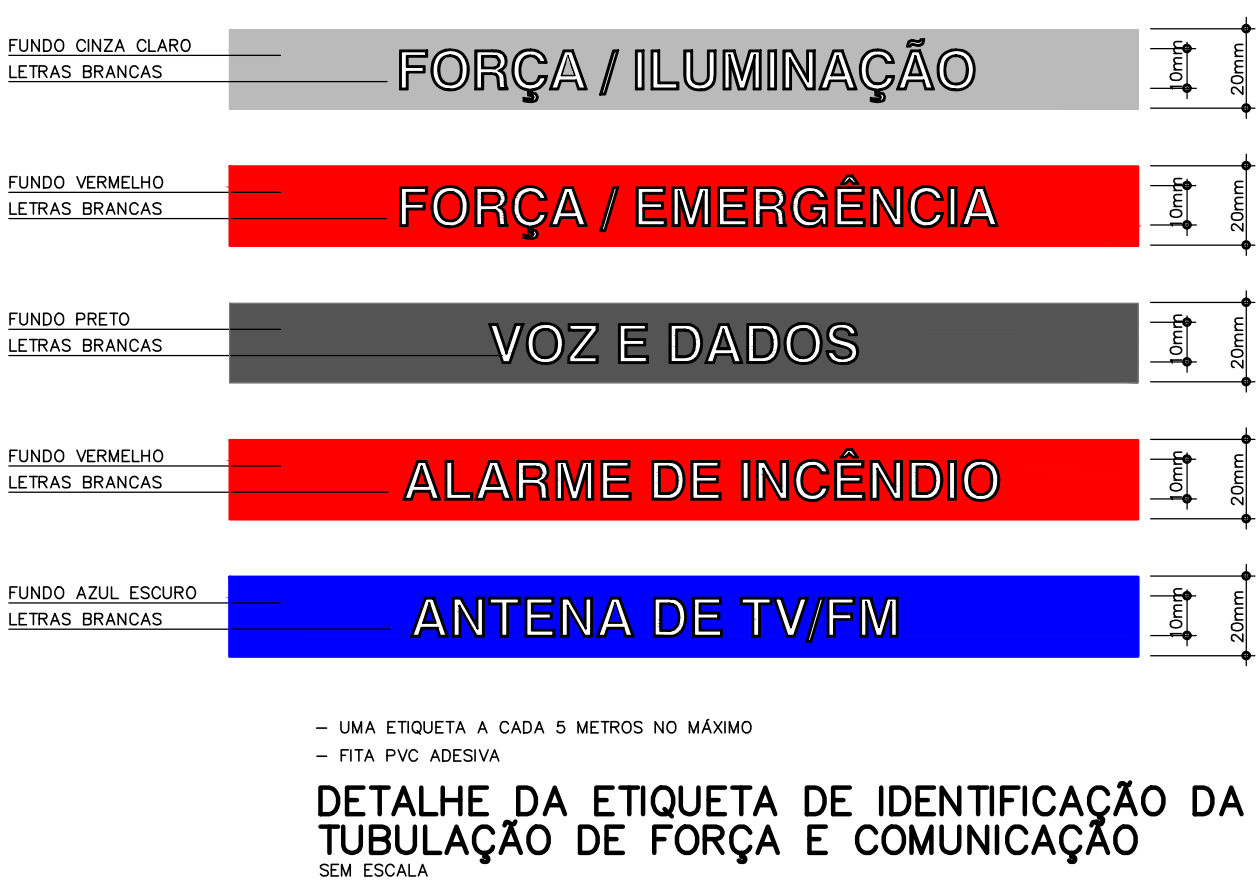
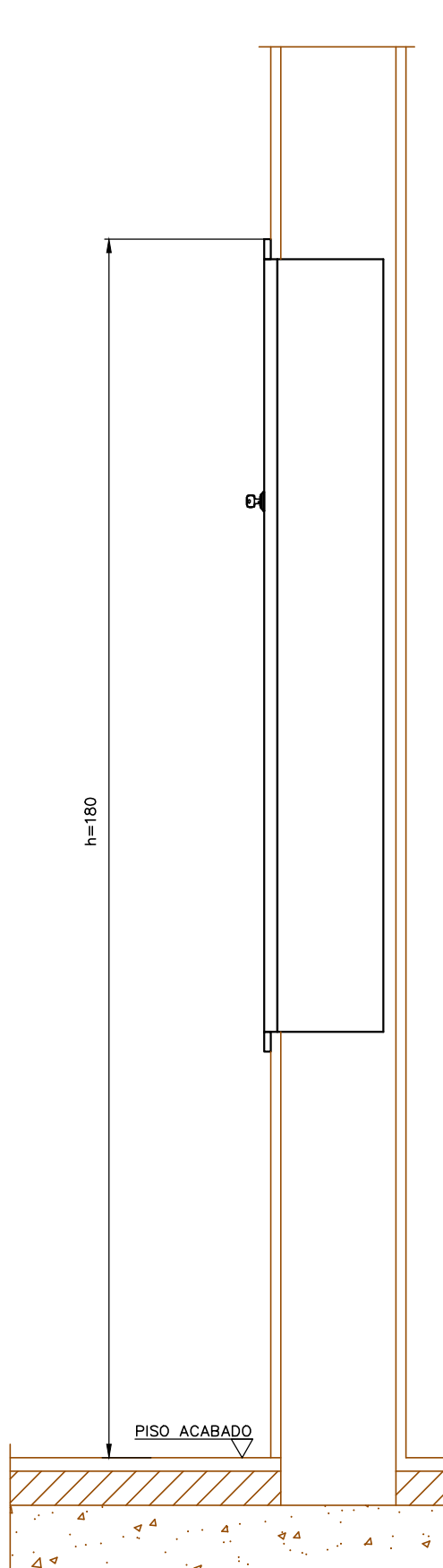
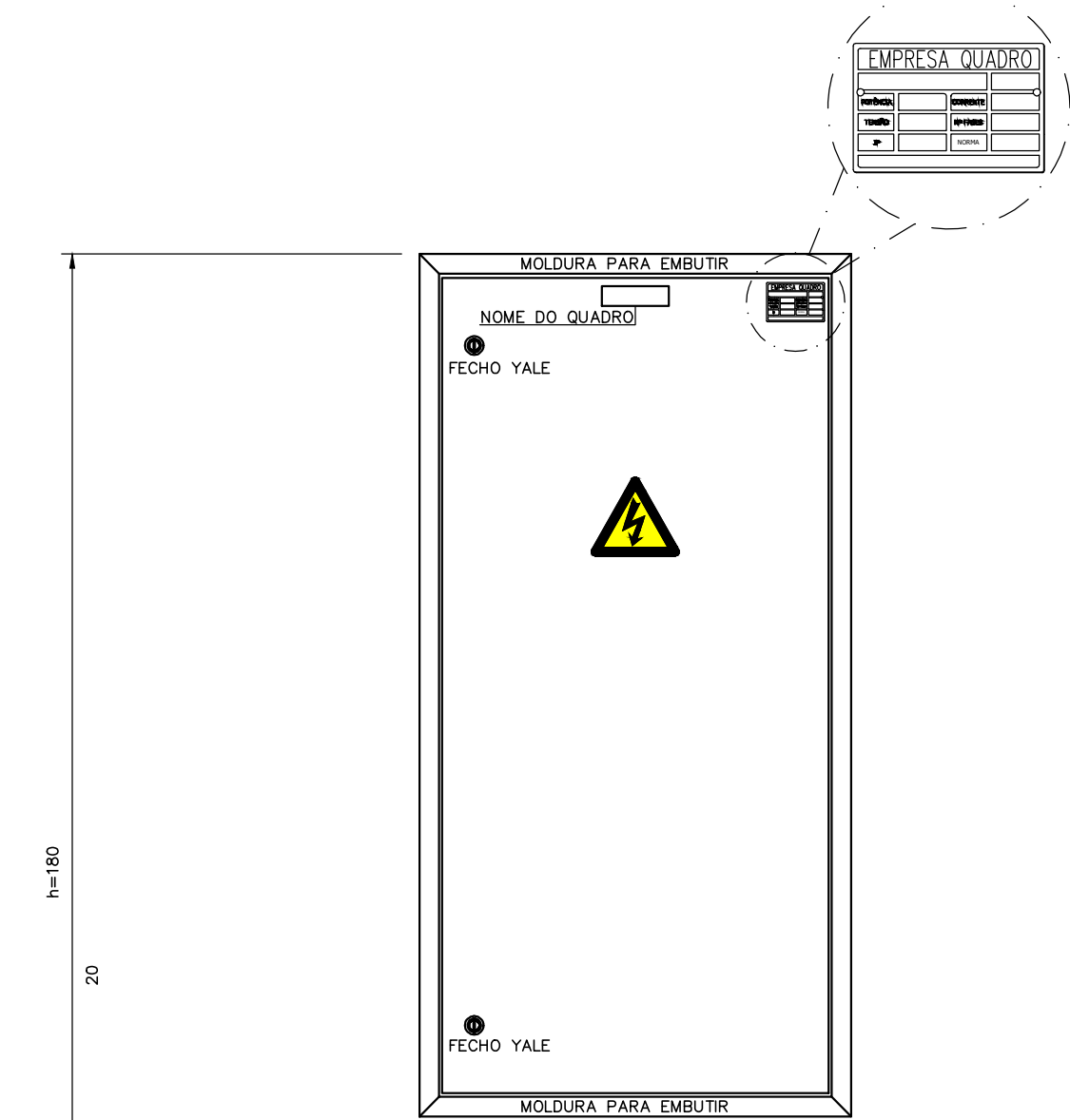
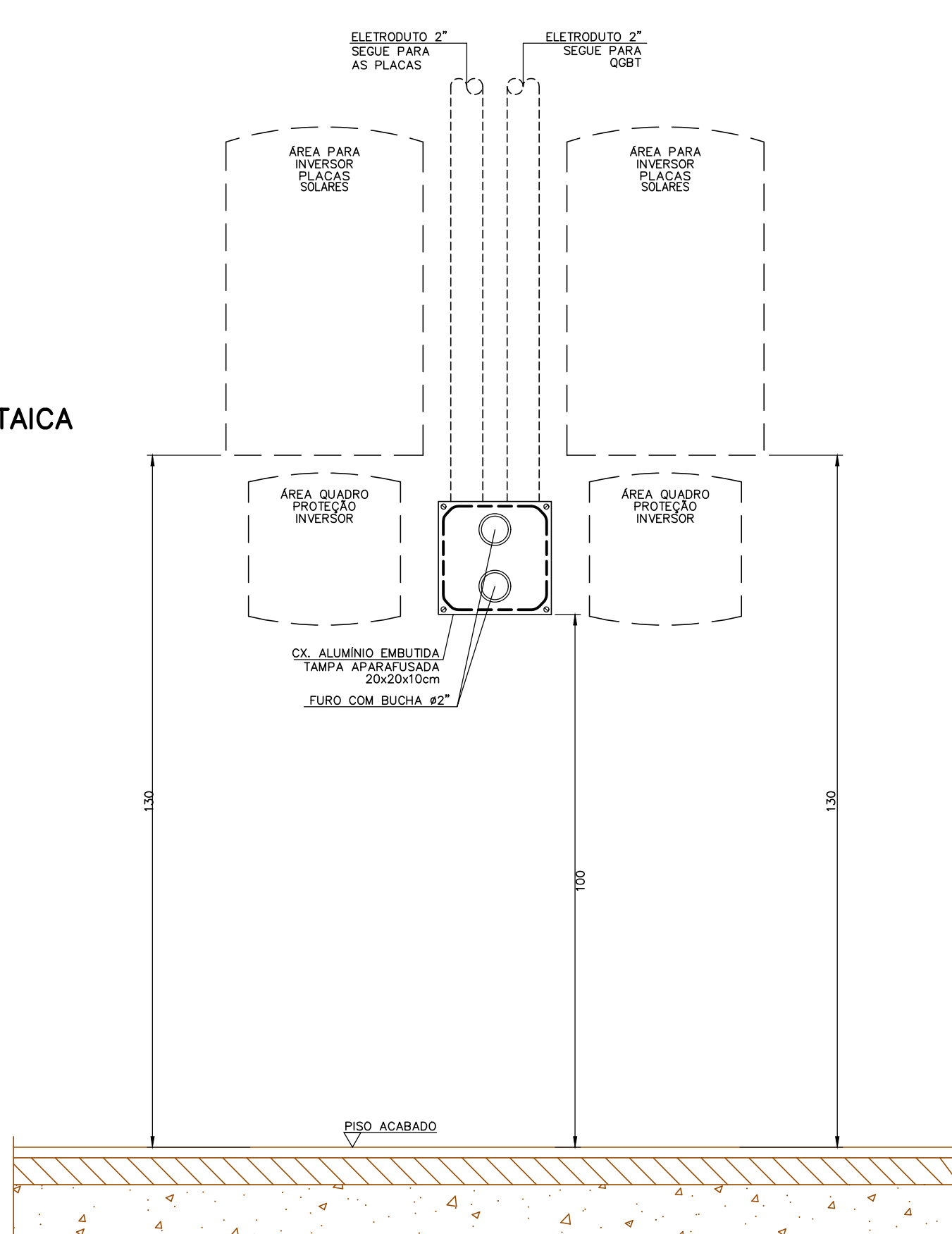
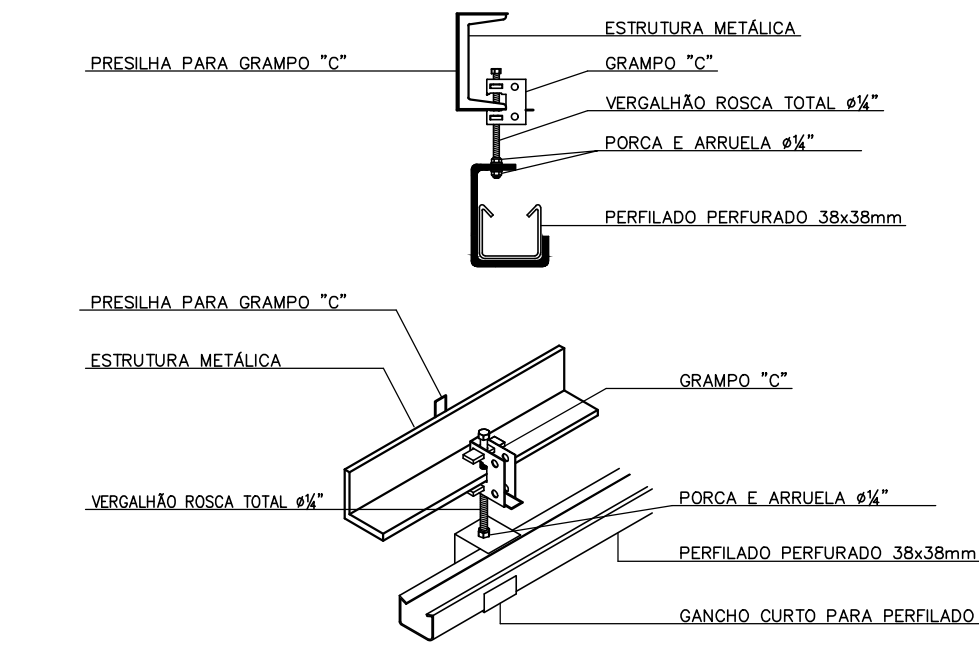
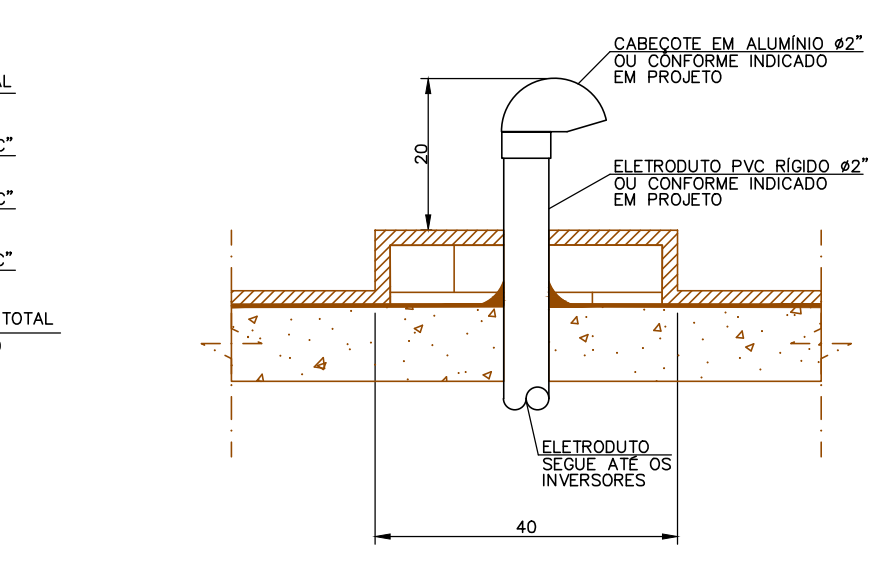
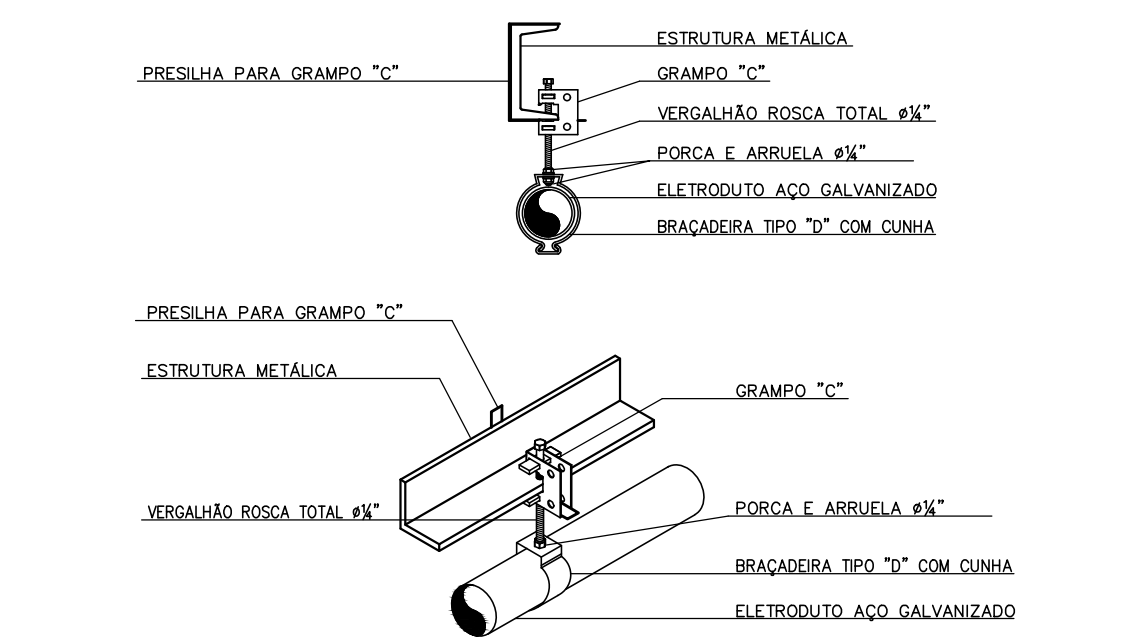
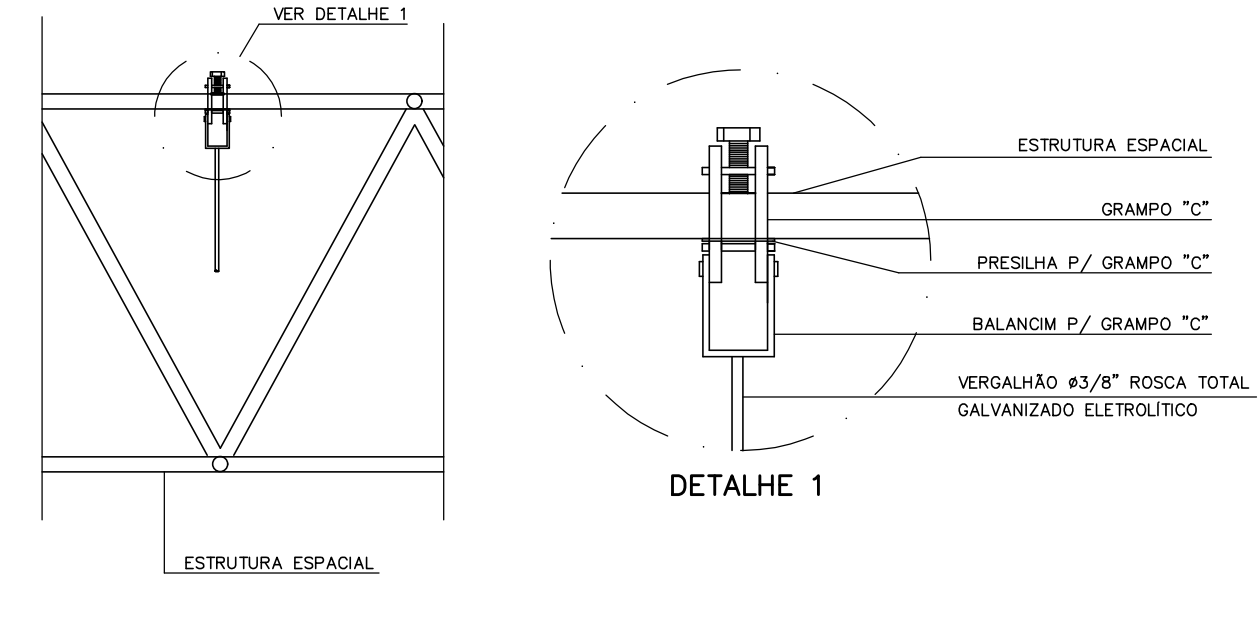
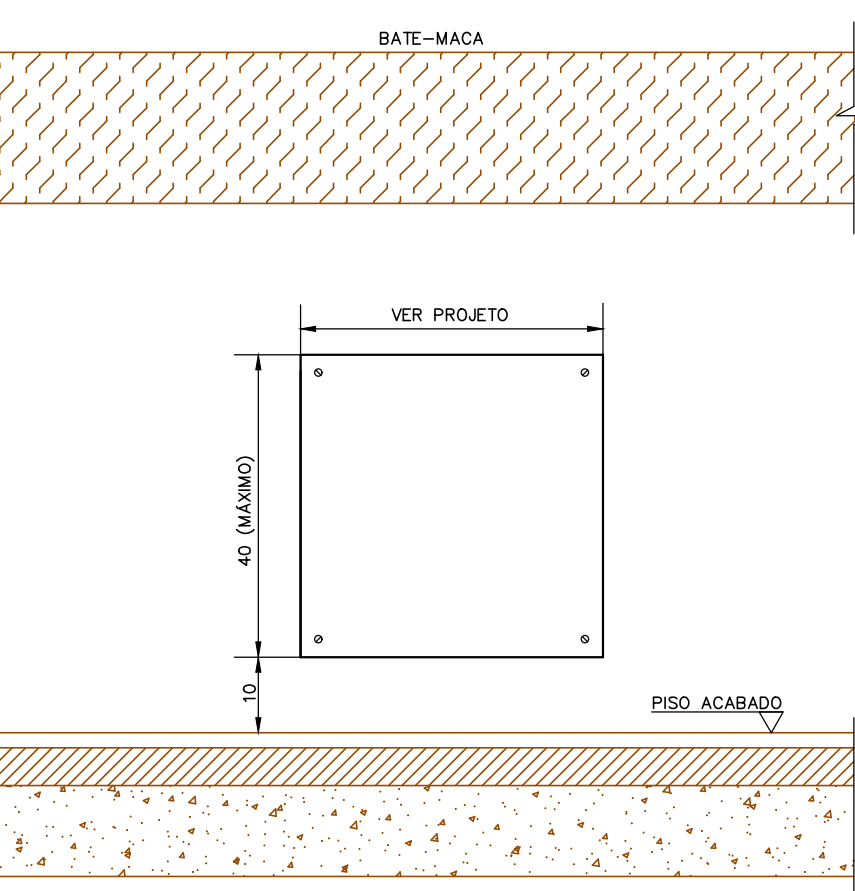
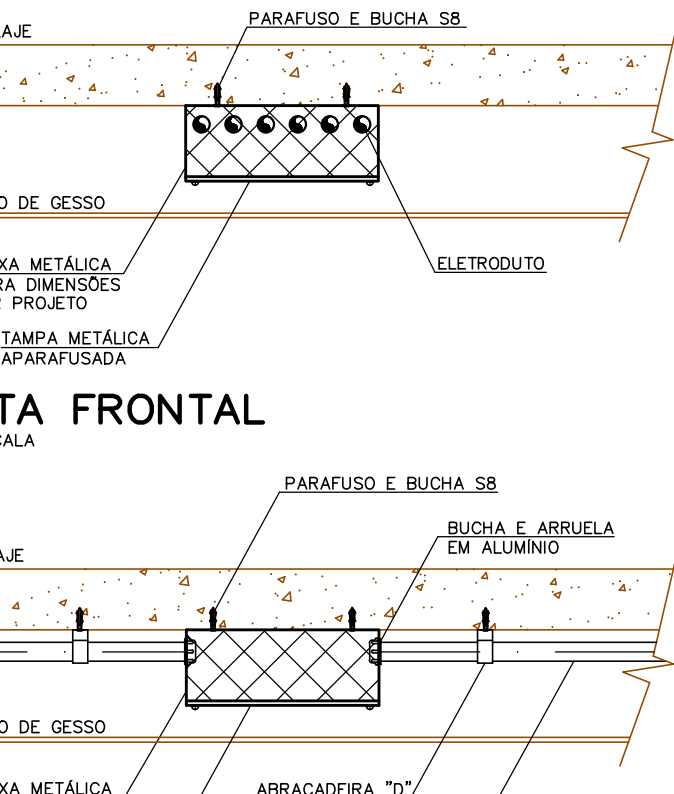
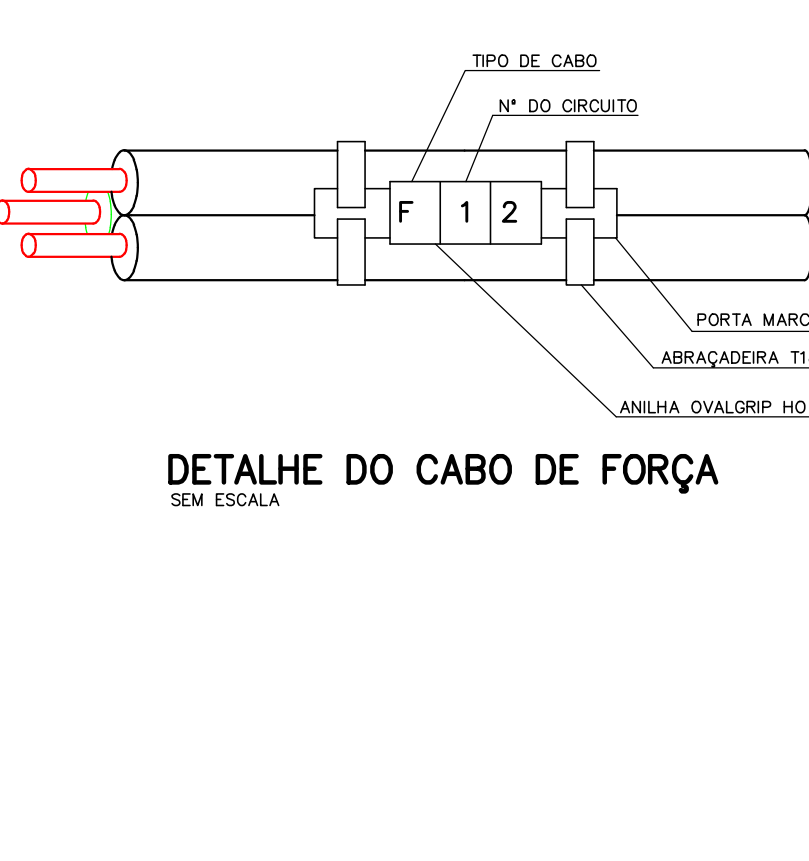
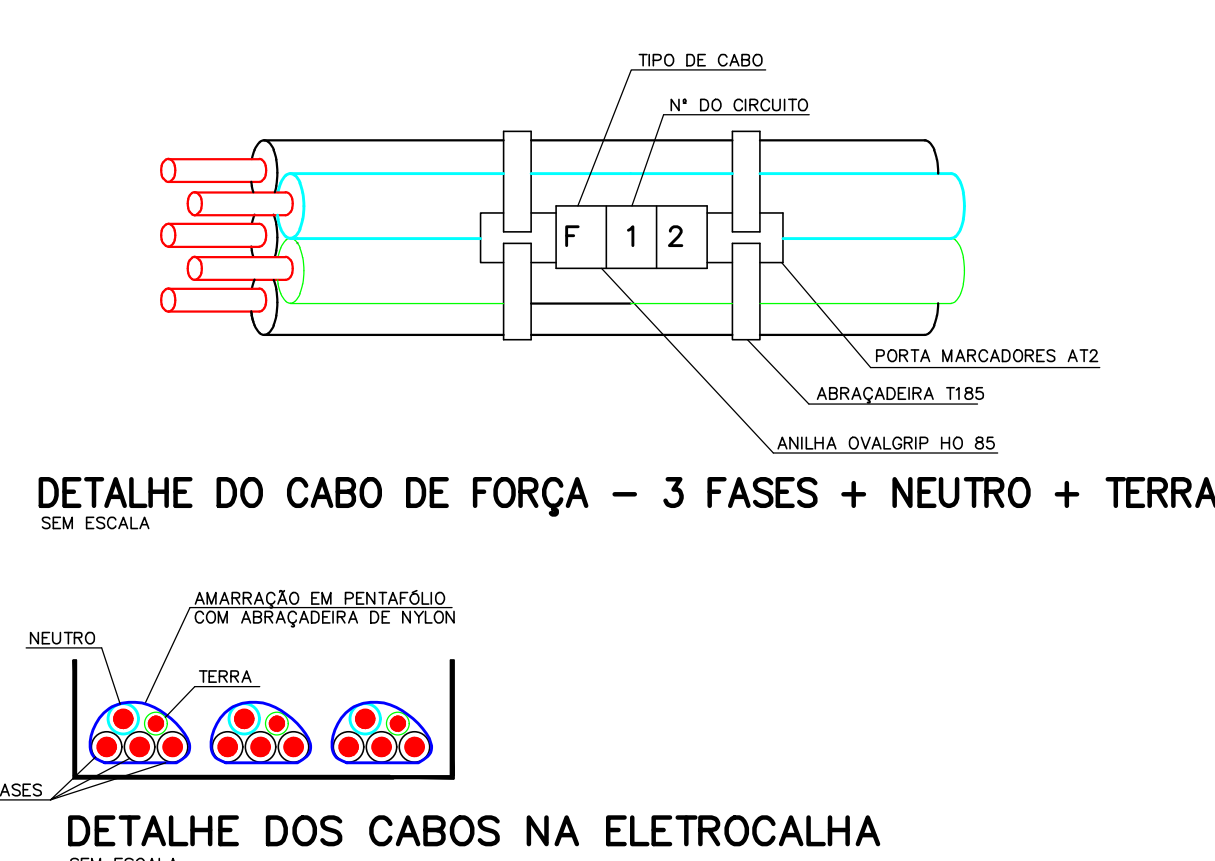
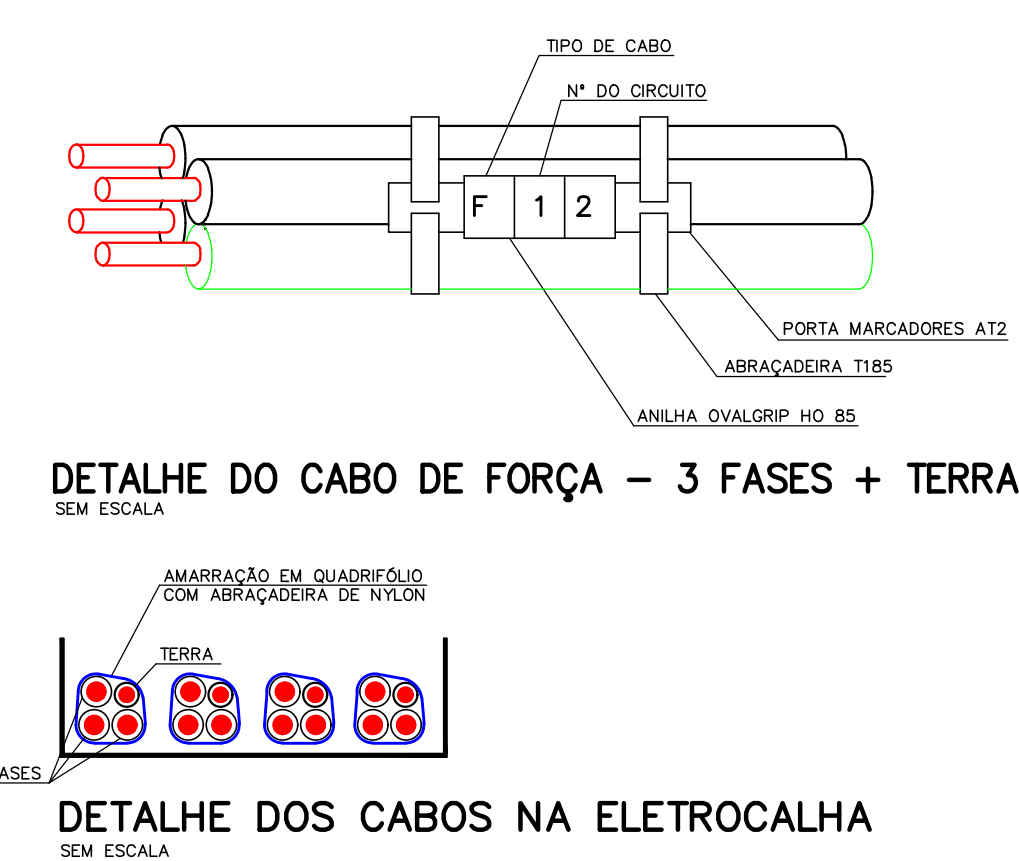
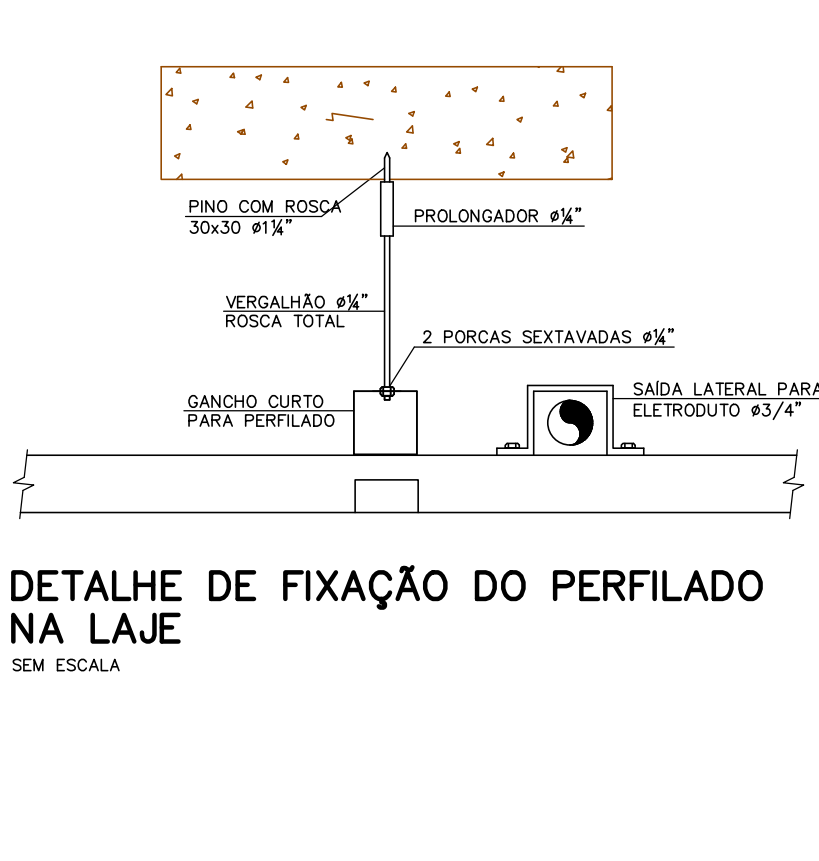
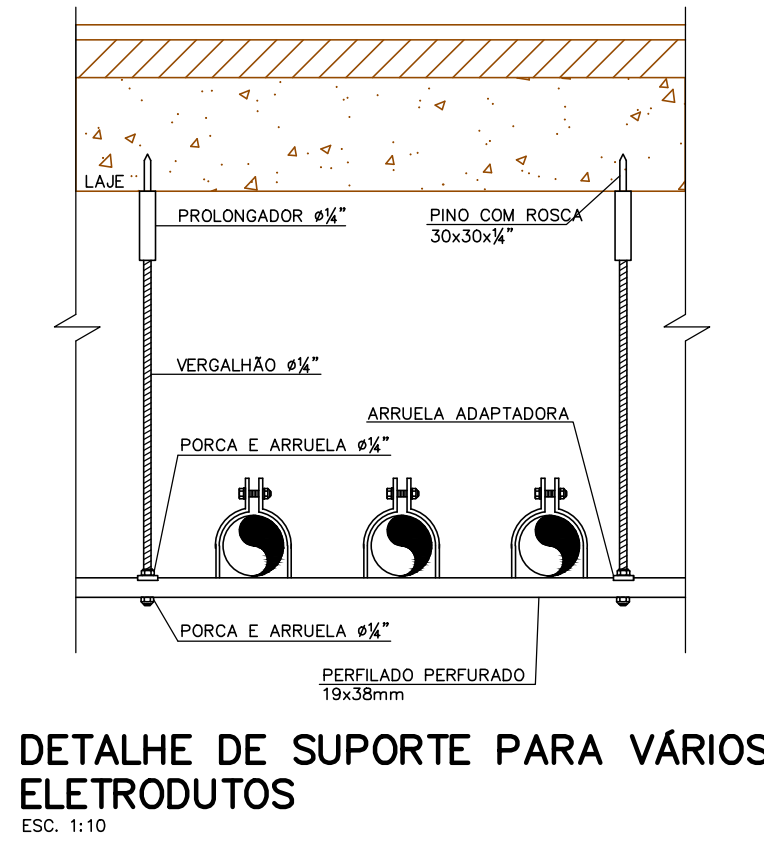
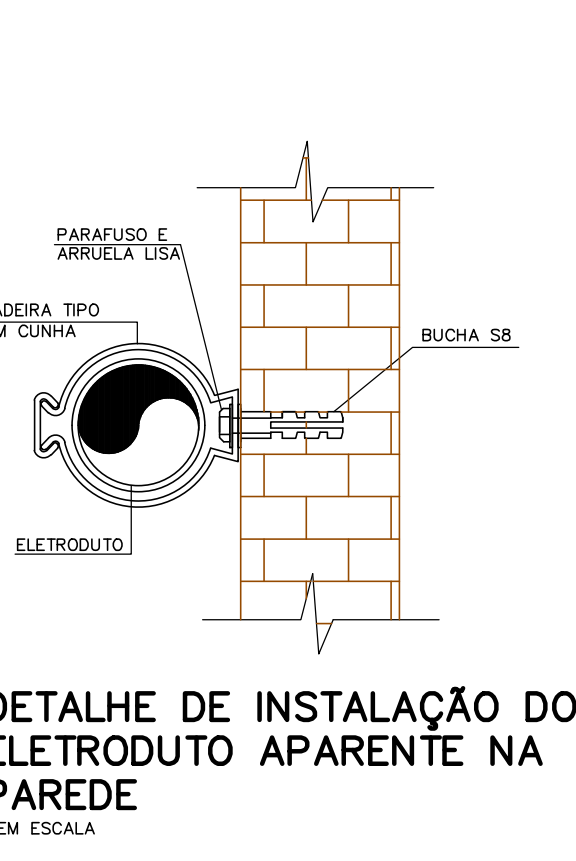
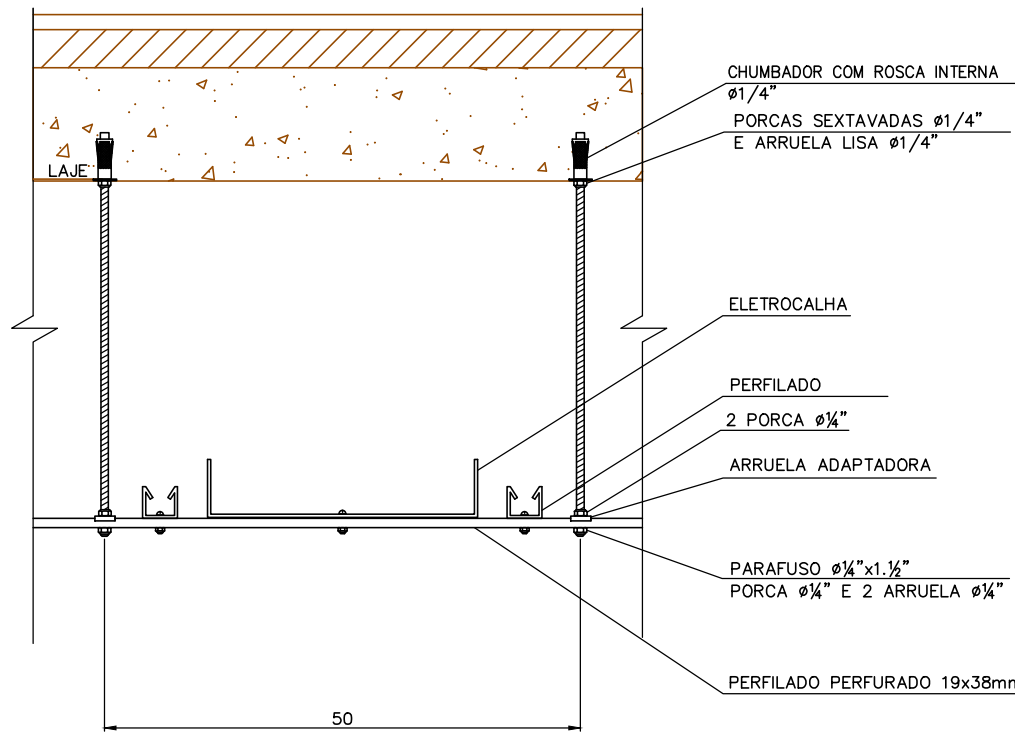
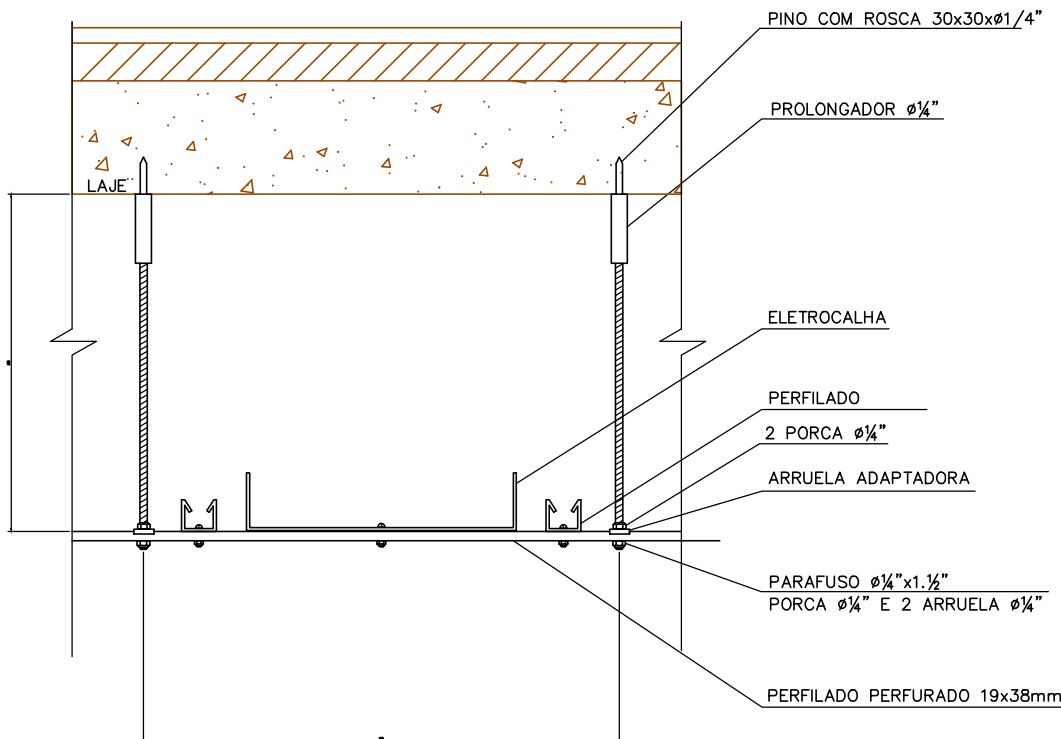
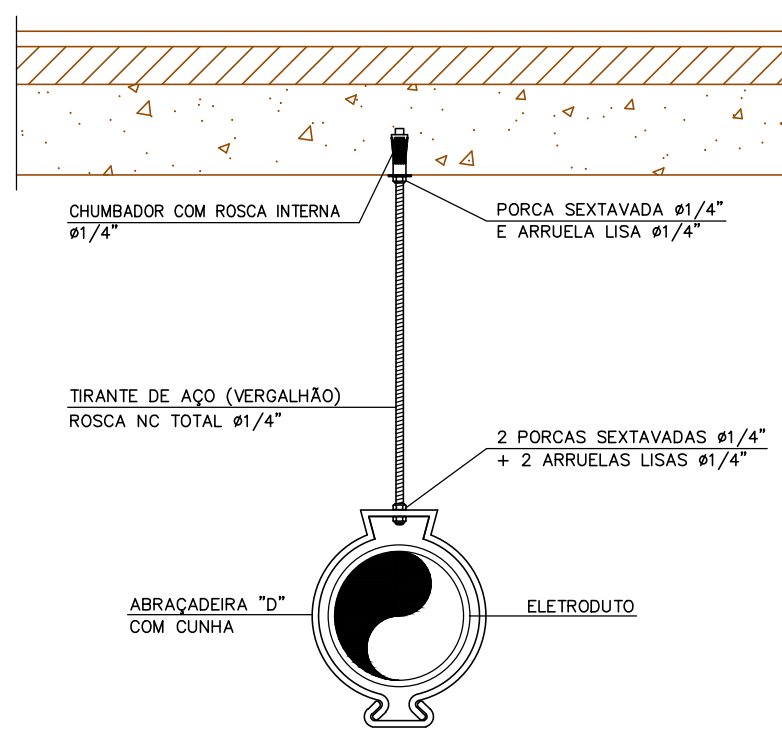
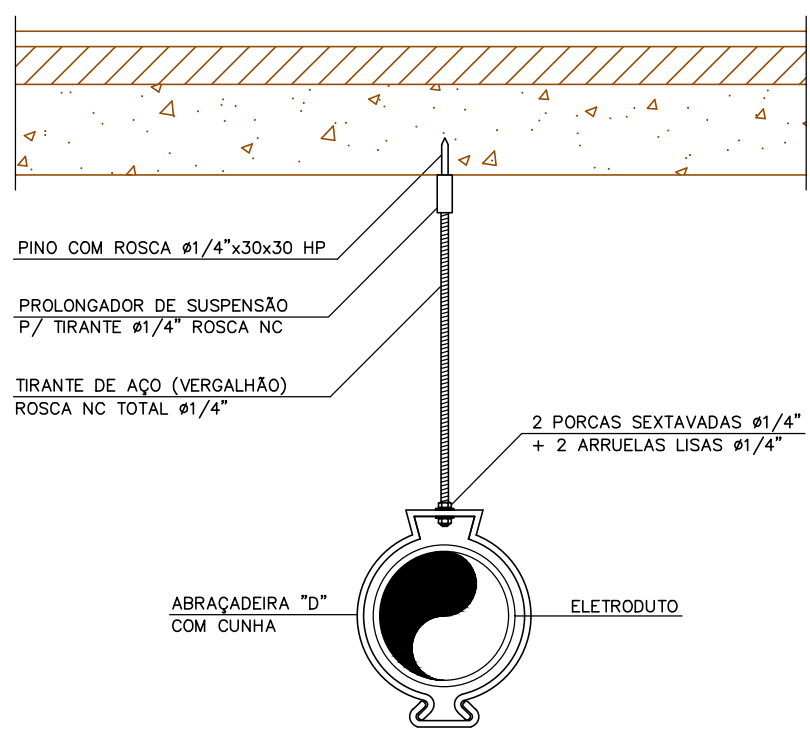
ESPESURA DA CHAPA DA ELETROCALHA COM ABA 50mm						
ELETROCALHA		BITOLA CHAPA (ESPESURA CHAPA)		TAMPA BITOLA CHAPA (ESPESURA CHAPA)		DISTANCIA MÁXIMA ENTRE SUPORTES
LARGURA (mm)	ABA (mm)					
50	50	20 (0,95mm)	24 (0,65mm)			2000mm
100	50	20 (0,95mm)	24 (0,65mm)			2000mm
150	50	20 (0,95mm)	24 (0,65mm)			2000mm
200	50	20 (0,95mm)	24 (0,65mm)			2000mm
250	50	20 (0,95mm)	24 (0,65mm)			2000mm
300	50	19 (1,1mm)	22 (0,80mm)			2000mm
350	50	19 (1,1mm)	22 (0,80mm)			2000mm
400	50	18 (1,25mm)	22 (0,80mm)			1500mm
500	50	18 (1,25mm)	22 (0,80mm)			1500mm

ESPESURA DA CHAPA DA ELETROCALHA COM ABA 100mm					
ELETROCALHA		BOLSA MINIMA (ESPESURA CHAPA)		TAMPA BOLSA MINIMA (ESPESURA CHAPA)	PONTILHA MINIMA ENTRE SUPORTES
LARGURA (mm)	ABA (mm)				
100	100	20 (0,65mm)	24 (0,65mm)	2000mm	
150	100	19 (1,11mm)	24 (0,65mm)	2000mm	
200	100	18 (0,25mm)	24 (0,65mm)	2000mm	
250	100	18 (0,25mm)	24 (0,65mm)	1500mm	
300	100	18 (0,25mm)	22 (0,65mm)	1500mm	
350	100	18 (0,25mm)	22 (0,65mm)	1000mm	
400	100	18 (0,25mm)	22 (0,65mm)	1000mm	
500	100	15 (0,55mm)	22 (0,65mm)	1000mm	
600	100	15 (0,55mm)	20 (0,55mm)	1000mm	
700	100	14 (0,55mm)	20 (0,55mm)	1000mm	
800	100	14 (0,55mm)	20 (0,55mm)	1000mm	
900	100	14 (0,55mm)	20 (0,55mm)	1000mm	
1000	100	14 (0,55mm)	20 (0,55mm)	1000mm	

OBSERVAÇÕES:

- PARA DETERMINAÇÃO DAS BITOLAS MÍNIMAS FORAM CONSIDERADOS OS PESOS PRÓPRIOS DAS CALHAS SOMADAS AOS PESOS DOS CABOS ELÉTRICOS UTILIZANDO-SE 40% NA ÁREA ÚTIL DA ELETROCALHA.
- NÃO FOI COMPUTADO O PESO DO INSTALADOR SOBRE A ELETROCALHA, UMA VEZ QUE TAL PROCEDIMENTO NÃO É COMPATÍVEL COM AS NORMAS DE SEGURANÇA (VDE NEMA VE-2-2001)
- FLECHA MÁXIMA 1/240 VÃO = 8mm

ESPESSURA DA CHAPA PARA PERFILADOS				
PERFILADOS		BITOLA MÍNIMA (ESPESSURA CHAPA)	TAMPA BITOLA MÍNIMA (ESPESSURA CHAPA)	DISTÂNCIA MÁXIMA ENTRE SUPORTES
LARGURA (mm)	ABA (mm)			
38	19	16 (1,59mm)	–	2000mm
38	38	16 (1,59mm)	–	2000mm



NOTAS

- 1) DIMENSÕES EM CENTÍMETROS EXCETO OUTRAS ESPECIFICADAS.
- 2) RATIFICAR MEDIDAS NA OBRA.
- 3) PARA ESPECIFICAÇÕES TÉCNICAS VER MEMORIAL DESCRITIVO.

R00	02/06/22	EMISSÃO INICIAL PROJETO EXECUTIVO	SILVIO H.	CELSO S.
Rev.:	Data	Descrição	Desenho	Verificação
projeto	contratante	gestor	contrato	





Projeto	098-PE LITOTECA URCA
Fase	PROJETO EXECUTIVO
Projetista	

[illegible]